



# Rookery South ERF Community Liaison Panel

11<sup>th</sup> June 2018

# AGENDA

1. Apologies for absence
2. Facilitator's opening remarks
3. Matters arising from the last meeting
  - Electricity Subsidy Scheme
  - Site Visit Proposal
4. Construction Update
  - incl section 278 works
5. Comments on the current draft Covanta newsletter
6. Rookery South website – updates
7. Matters to be carried forward
  - Public Rights of Way
  - Community Trust updates
8. Any other urgent business
9. Time, date and venue for the next CLP meeting

# Site Activities to date

There have been two distinct phases to the site project works to date

## 1) **Low Level Restoration Scheme (LLRS) - Phase 1**

Works during this scheme involved:

- Bulk earth works
- Drainage works

Works on site commenced April 2017

Completed by October 2017



# Site Activities to date

- 2) **Construction of new access road to Rookery south pit:**
- Vegetation clearance under the surveillance of an ecologist
  - Excavation and reformation of access road
  - Installation of temporary and permanent utilities services (water, electric and BT)
  - Commenced in January 2018; expected to be finished early June 2018.

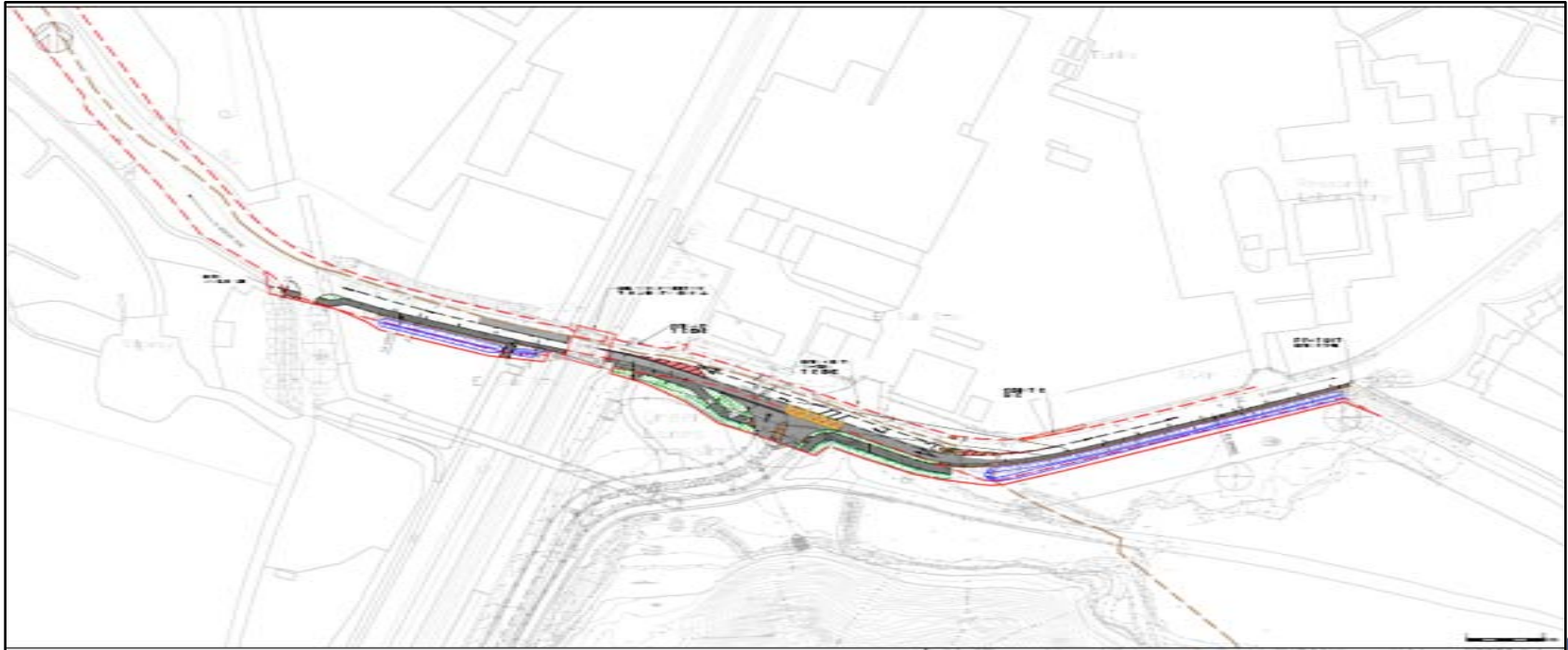


# Planned site activities

## 3) The next phase to be completed is the S.278 Highways works

Works include:









- Widening of current access off Green Lane and a ghost island for right-turn traffic
- Installation of new street lighting
- Installation of new pedestrian footpaths and crossing points
- Reformation and improvement of drainage channel
- Temporary closure of one lane on Green Lane between Stewartby Way and the level crossing, with temporary traffic lights operational, for a period of 6 weeks



# Site statistics

- The workforce for the construction of the Project will be approximately 320 persons over the anticipated 39 month construction phase.
- This is the equivalent of 1,040 person years of construction employment in total.
- Since site activities commenced in April 2017 we have completed
  - Inductions 321
  - Man hours completed 95,381 Without injury

# Future Works

Activity	2017	Year 1	Year 2	Year 3	Year 4
Design					
Access Road & Green Lane Junction					
Civil Construction					
Engineering & Procurement					
M&E Installation					
Cold Commissioning					
Hot Commissioning					
Operation & Testing					

# Future Works

- Normal hours of working will be:
  - Monday to Friday: 07.00 to 19.00 hours  
(excluding Bank Holidays); and
  - Saturday: 07.00 to 13.00 hours.
- Managed by the Code of Construction Practice



# Latest news on the construction site

- Unexploded ordnance were found on Friday 8th some miles away
- As the UXOs had the potential to cause injury or harm to the public (bombs were live) Covanta was asked to assist by allowing the authorities to bring them to the Rookery site as a safe location for detonation and to avoid the evacuation of residents
- Bombs were safely detonated at 4:30pm with the help of our contractor who provided equipment and manpower to dig a hole



# Project Newsletter – Story Ideas

- New Website Announcement
  - New, easier to navigate design
  - Videos
  - FAQs
  - CLP information
- Project Facts (Myths vs Facts)



**Myth: Rookery South will import and process hazardous or medical waste from overseas.**

**Fact: Rookery South will only process household, commercial and industrial waste from the U.K.**

- Employment plan details
- EfW vs Landfill and EfW's use in the UK and around the world
- Contribution to the Bedford & Milton Keynes Waterway
- Latest Project Work - Construction of Site Access on Green Lane
- Distribution to area homes by the end of June

## Suggestions?

# New Website



The Rookery South Energy Recovery Facility will process waste that cannot be reused or recycled to generate clean energy

#### Latest News

**Rookery South News**  
Click on the link below to latest project newsletters

[ROOKERY SOUTH NEWS](#)

Covanta and Veolia are partnering to develop the Rookery South Energy Recovery Facility (ERF) at Rookery South Dr. a former brick clay extraction site near Stratford in Bedfordshire. The ERF is a sustainable



#### Frequently Asked Questions



Why is the facility being built?

[PROJECT OVERVIEW](#)



How will the facility convert waste into energy?

[HOW DOES IT WORK?](#)



What are the emissions?

[EMISSIONS INFORMATION](#)



How will the facility benefit the community?

[LEARN MORE](#)



## Community Liaison Panel

Covanta and Veolia have re-engaged the Rookery South Community Liaison Panel (CLP) which was originally established in 2008. The CLP plays a key role in the communications arrangements of the project, which have been put in place in order to ensure effective dialogue between Covanta, Veolia and the local community. We value the views and opinions of our neighbours and look forward to building open and transparent relationships.

A typical meeting format for the CLP is as follows:

1. The agenda is set by the members at the end of the previous meeting;
2. Presentations are given by Covanta, Veolia and/or members of its design team;
3. Members ask questions and/or for further information to be given at a later meeting, if necessary. Covanta and Veolia ensure that specialists are in attendance to present and answer questions about technical issues where necessary;
4. The agenda for the following meeting is set, with further requests for items to be added received in the interim, via email;
5. Meetings are programmed to last 2 hours;
6. Following each meeting, record notes are prepared by the independent facilitator.

#### Meeting Notes & Presentations

8 March 2018

Notes

EA Presentation

Electricity Subsidy Scheme

Presentation

15 January 2018

16 October 2017

12 June 2017



## Investing in the Community

We recognise the importance of being part of the wider community and have established a community engagement plan that will have positive impacts on our neighbours.

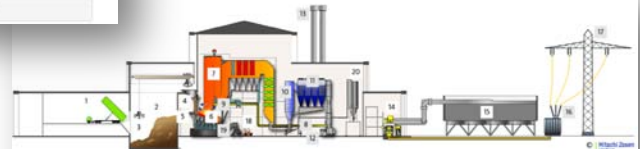
The development of the Rookery South Energy Recovery Facility will bring a range of local community, employment, infrastructure and environmental benefits to the local area. During the planning process, several ways to contribute to the local community were identified.

Interested in partnering with us? We would be happy to hear from you.

[Contact Us](#)



## How Does the Facility Work?



#### Waste Receiving and Storage

- 1 Tipping hall
- 2 Waste bunker
- 3 Waste crane

#### Combustion and Boiler

- 4 Feed hopper
- 5 Ram feeder
- 6 Hitachi Zosen Inova grate
- 7 Five-pass boiler
- 8 Flue gas recirculation
- 9 Secondary air injection

#### Flue Gas Treatment

- 10 Semi-Dry reactor
- 11 Fabric filter
- 12 Induced draft fan
- 13 Stack

#### Energy Recovery

- 14 Condensation turbine
- 15 Air cooled condenser
- 16 Transformer
- 17 Electricity export

#### Residue Handling and Treatment

- 18 Bottom ash extractor
- 19 Boiler ash
- 20 Residue silo

Thank You