

John Saunders, Chief Executive  
David Cliff, Case Leader

## IPC Stakeholder Event

**12<sup>th</sup> March 2010**

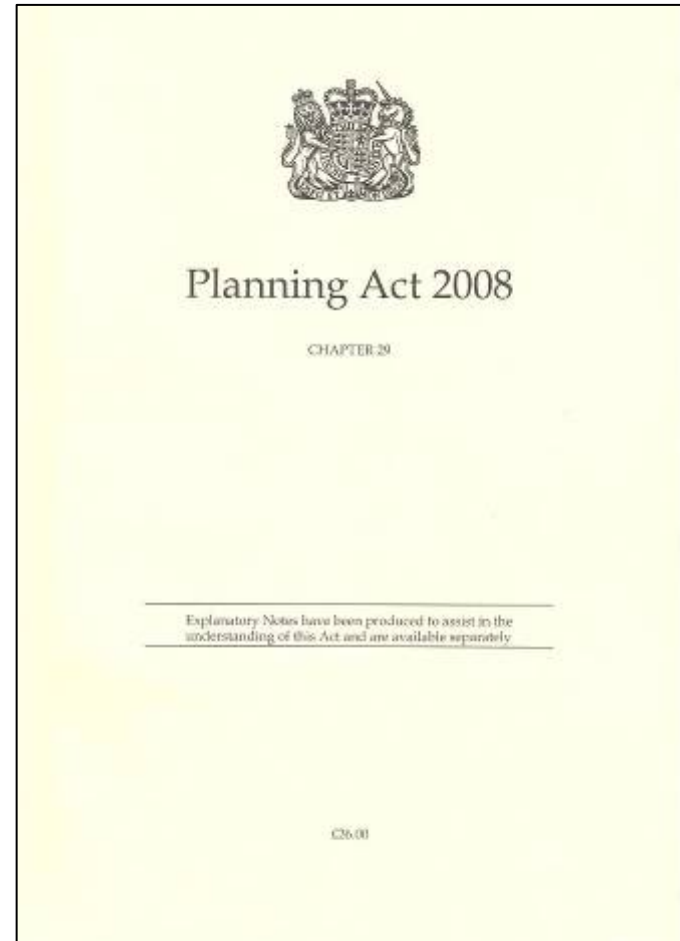
# Why the IPC?

---

- Simplifying the process
- Ensuring a fairer approach, with better opportunities for all to take part
- Insisting on the highest standards of applications from promoters
- Applying independent professional and technical judgement
- Reducing the time taken for deciding major applications to less than a year
- Cutting the cost of delivering national infrastructure by £300 million annually

# The Act provides for

- A single integrated consent regime
- National Policy Statements
- A new duty on applicants
- Stronger community engagement
- IPC



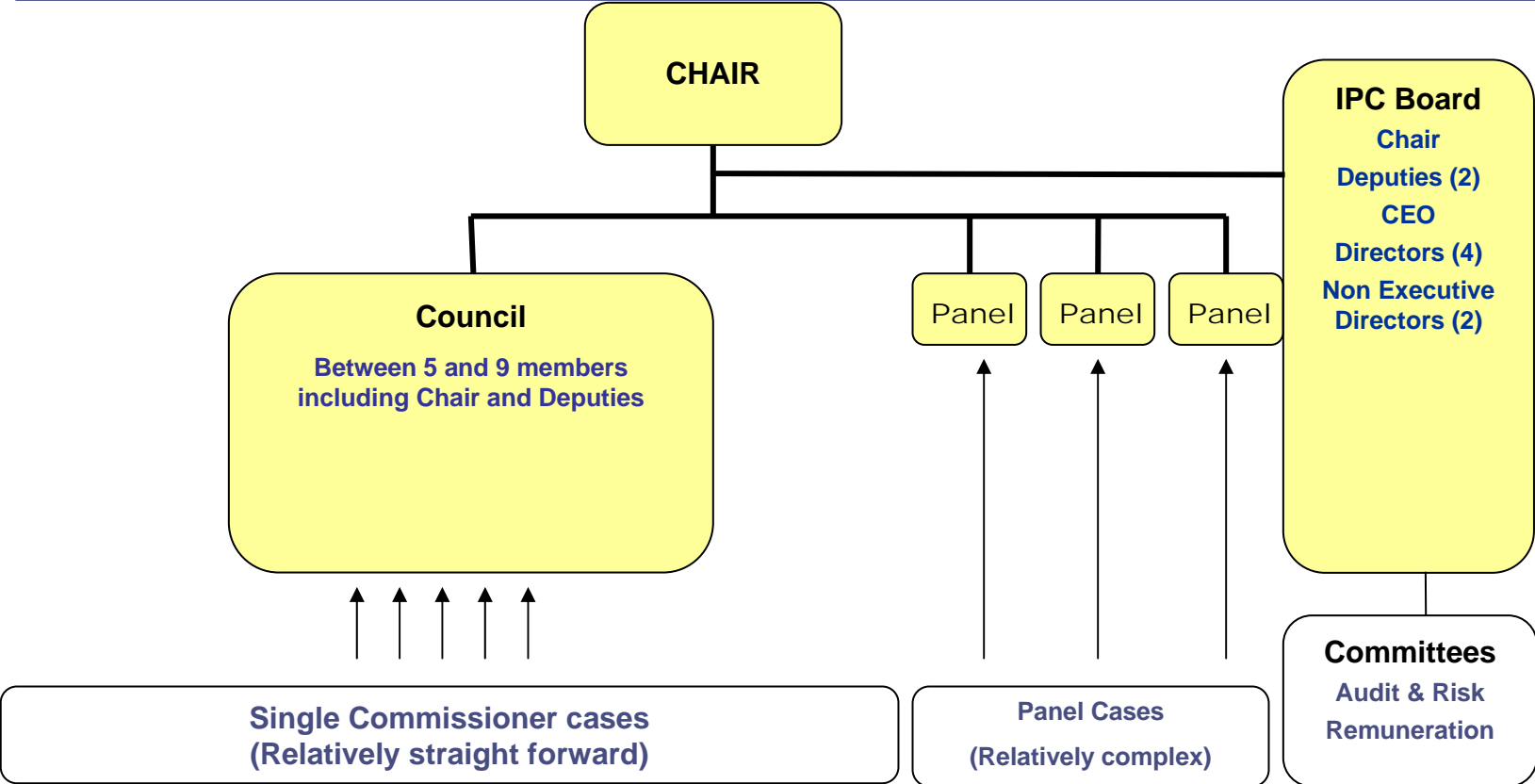
# Our five commitments

---

1. Engagement
2. Openness
3. Consensus
4. Sustainability
5. Independent decisions

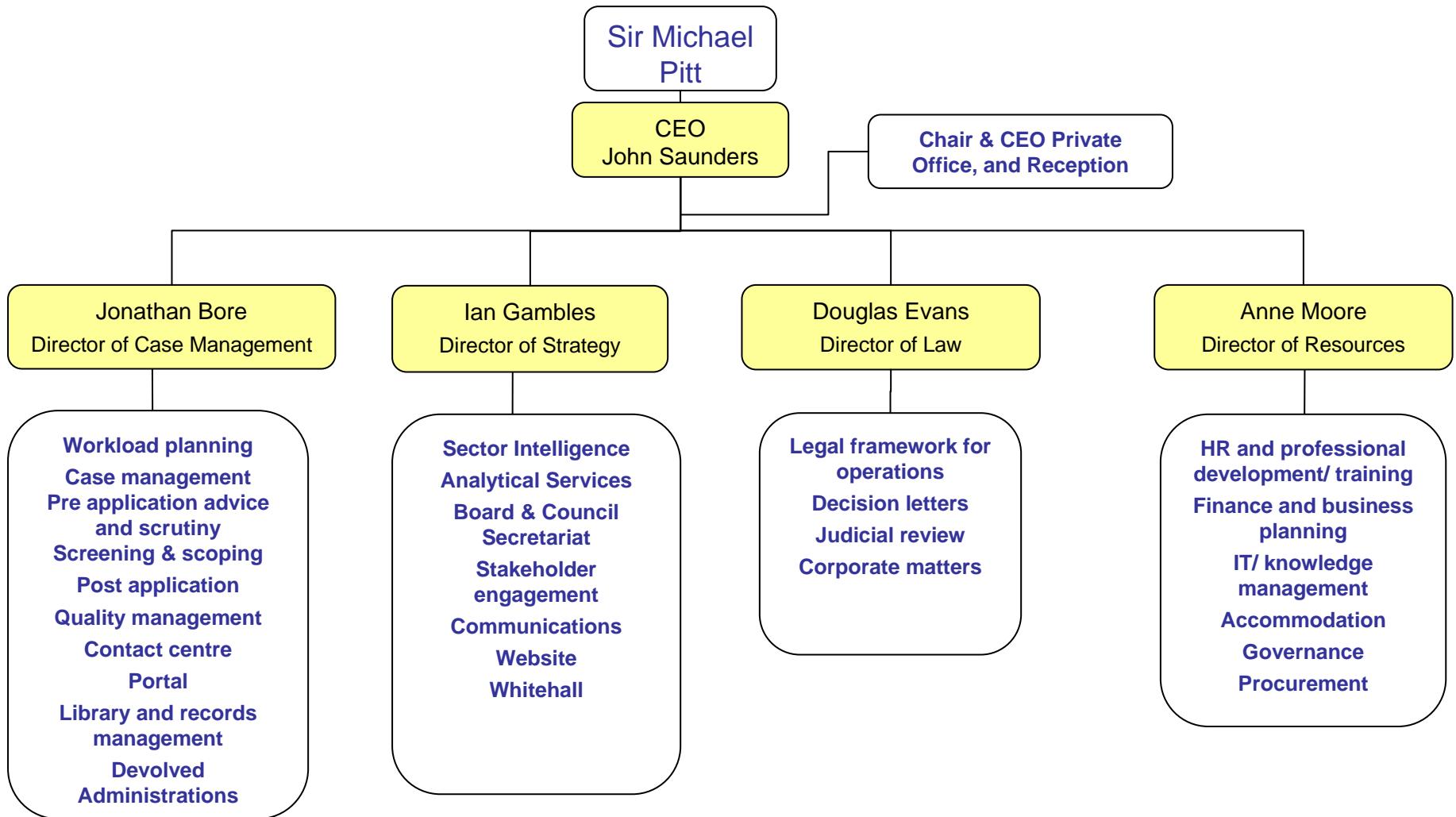


# The Commissioners





# The Secretariat



# Workload

---

- Until 1 March 2010
  - Advice giving mode
  - Stakeholder engagement
  - Scoping requests
- 1 March 2010 onwards
  - Receive applications from energy and transport sectors only

# Map of proposed projects





# Confirmed projects

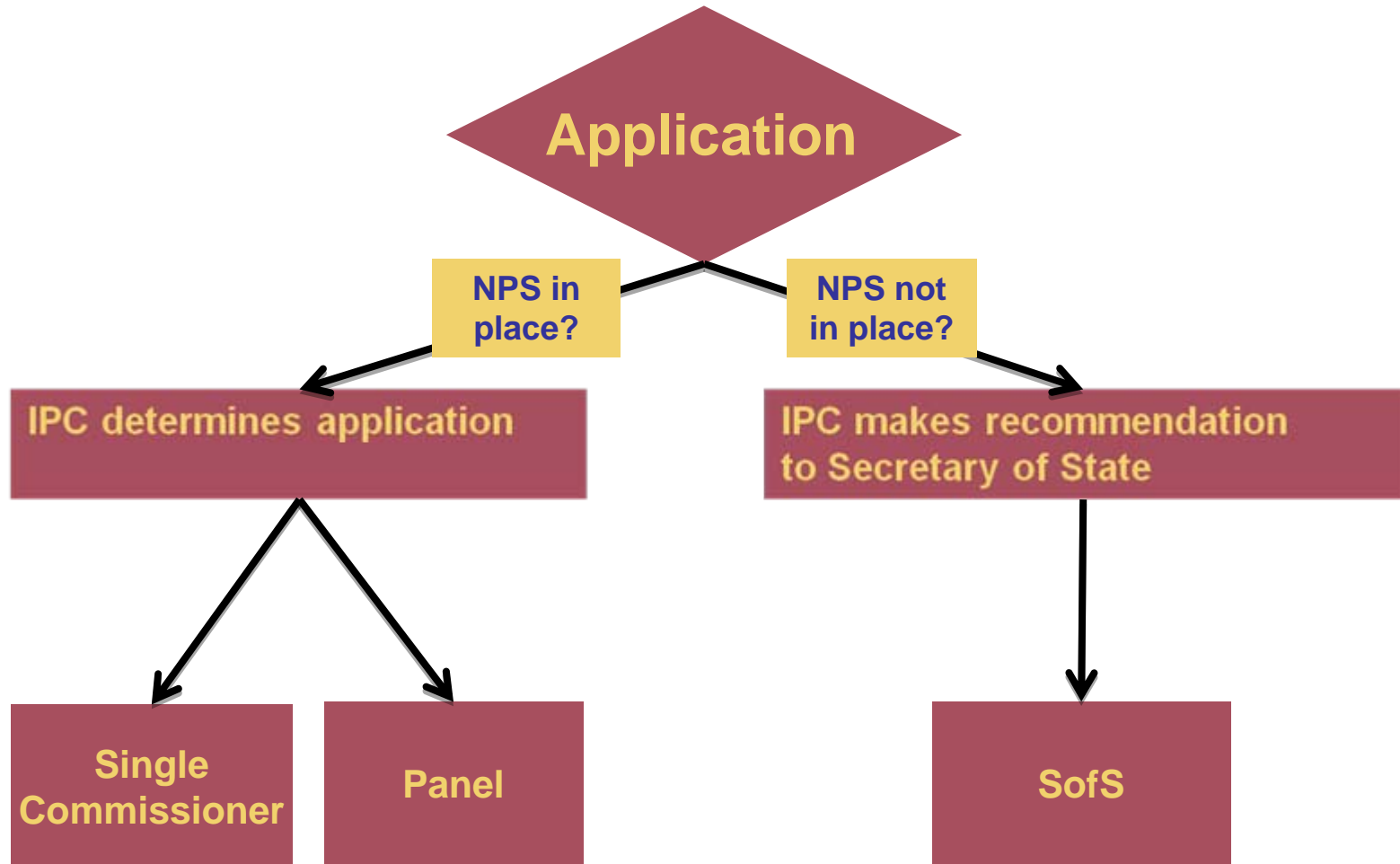
**A** Acceptance stage    **P** Pre-examination stage    **E** Examination Stage    **D** Decision Stage

Location	Proposal	Company	Anticipated date of submission	M	A	M	J	J	A	S	O	N	D	J	F	M
Rookery South, Bedfordshire	Waste combustion plant	Covanta	30/04/2010		A	P	P	P	E	E	E	E	E	E	E	D
Blyth, Northumberland	Biomass power plant	RES New Ventures	01/06/2010				A	P	P	P	E	E	E	E	E	E
Llanllwni, Carmarthenshire	Windfarm	RES UK and Ireland	01/06/2010				A	P	P	P	E	E	E	E	E	E
Nant-y-Moch, Ceredigion	Windfarm	Airtricity	01/07/2010					A	P	P	P	E	E	E	E	E
Clocaenog, Denbighshire	Windfarm	RWE NPower Renewables	01/07/2010					A	P	P	P	E	E	E	E	E
Brig y Cwm, Merthyr Tydfil	Waste combustion plant	Covanta	01/07/2010					A	P	P	P	E	E	E	E	E
Hinkley Point, Somerset	New nuclear power station	EDF	02/08/2010						A	P	P	P	E	E	E	E
Dyfnant Forest, Powys	Windfarm	Scottish Power Renewables	01/11/2010									A	P	P	P	E
Brechfa, Carmarthenshire	Windfarm	RWE Innogy	01/12/2010										A	P	P	P
Triton Knoll, 33km off Lincolnshire Coast	Windfarm	RWE Innogy	01/12/2010										A	P	P	P
Tilbury, Essex	Gas-fired power station	RWE npower	01/12/2010										A	P	P	P

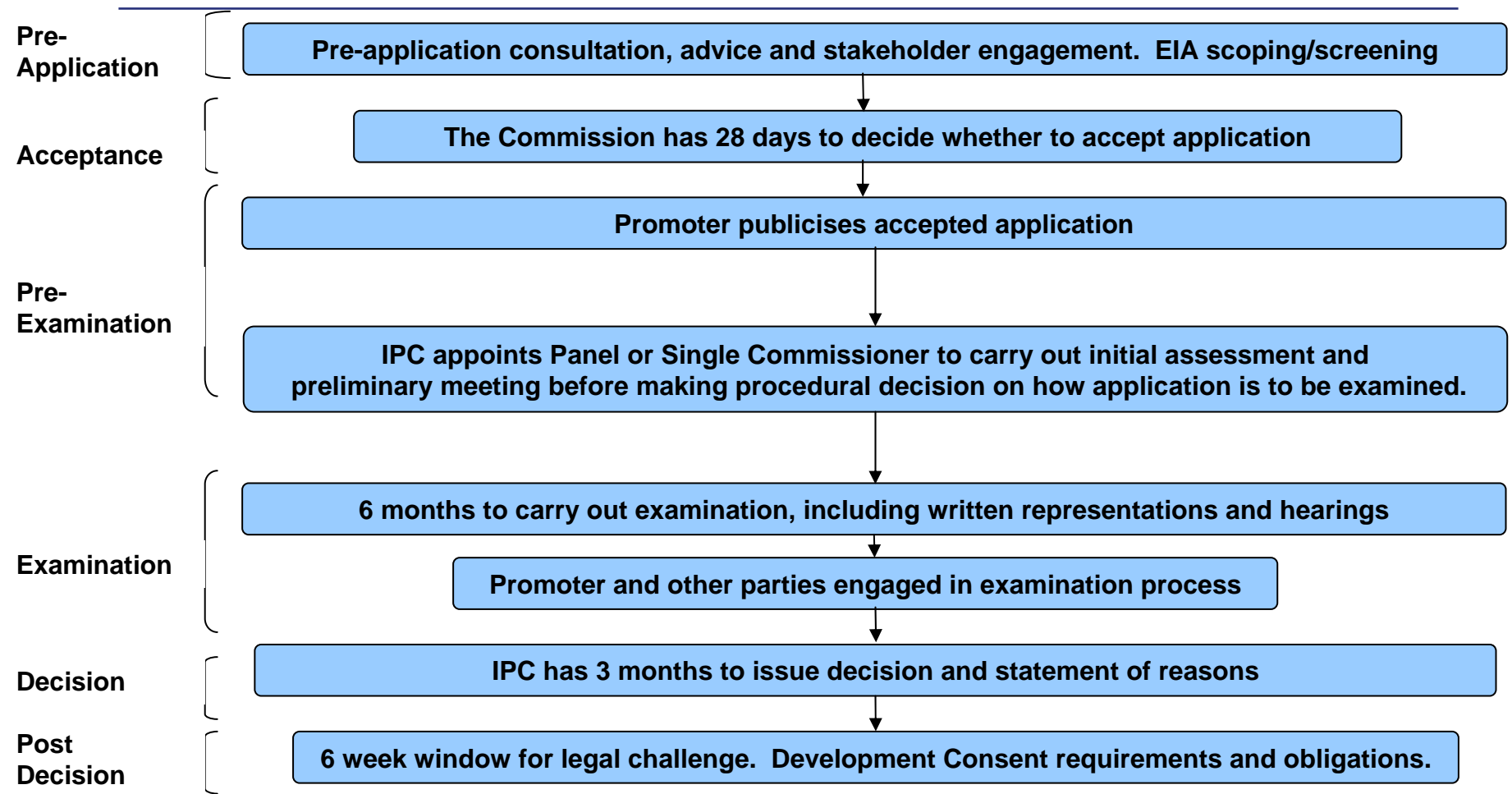


## Two ways of operating

---



# Stages in the Process



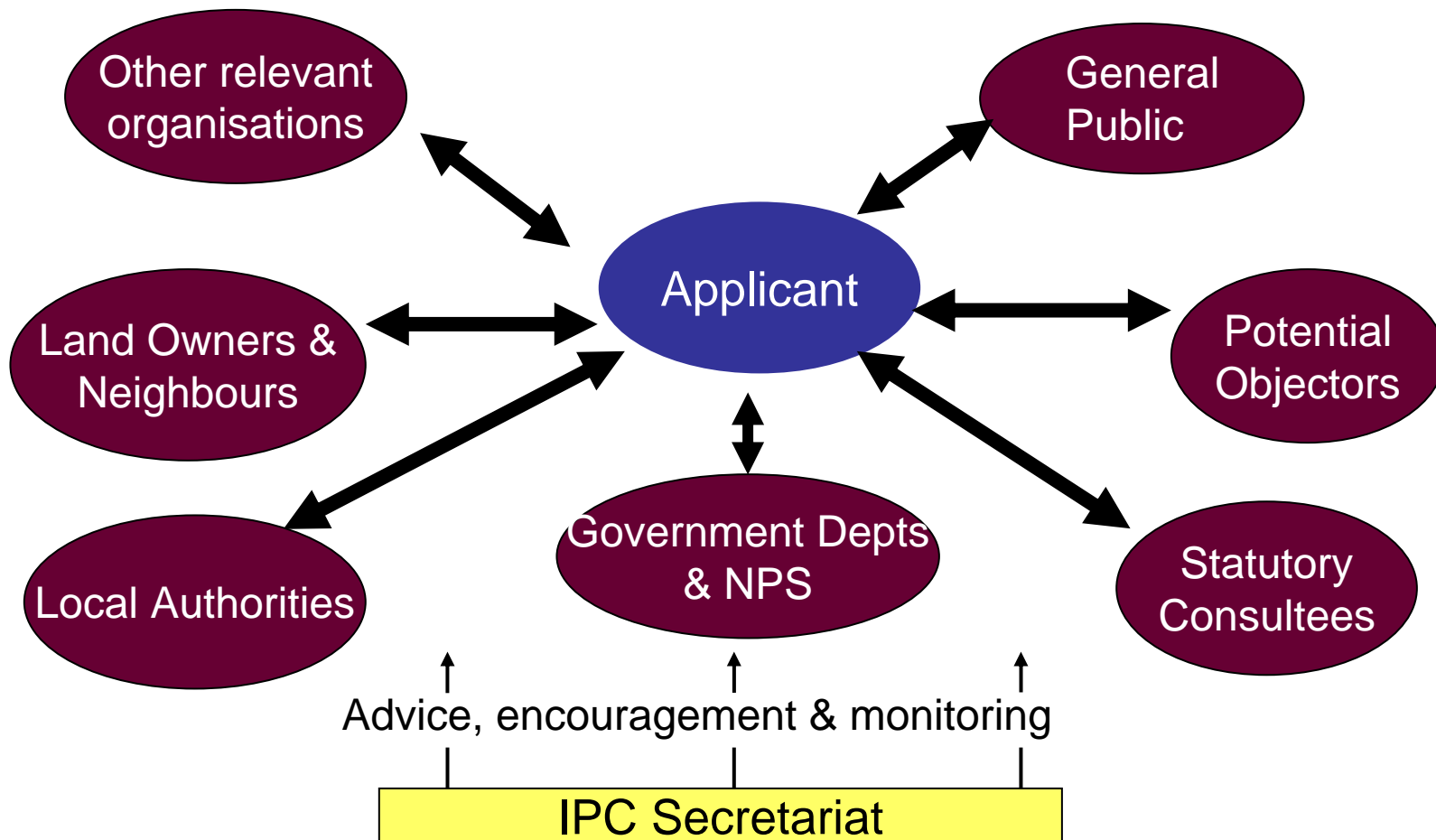
# The process stages (1)

---

## *Pre-application*

- Frontloaded process
- Environmental assessment (screening & scoping)
- Consultation and publicity (s42 & s48)
- Statement of Community Consultation
- Community consultation & engagement
- Land ownership and access to land
- Agreeing common ground, draft requirements & obligations

# Pre-Application: effective engagement



# The process stages (2)

---

## *Acceptance*

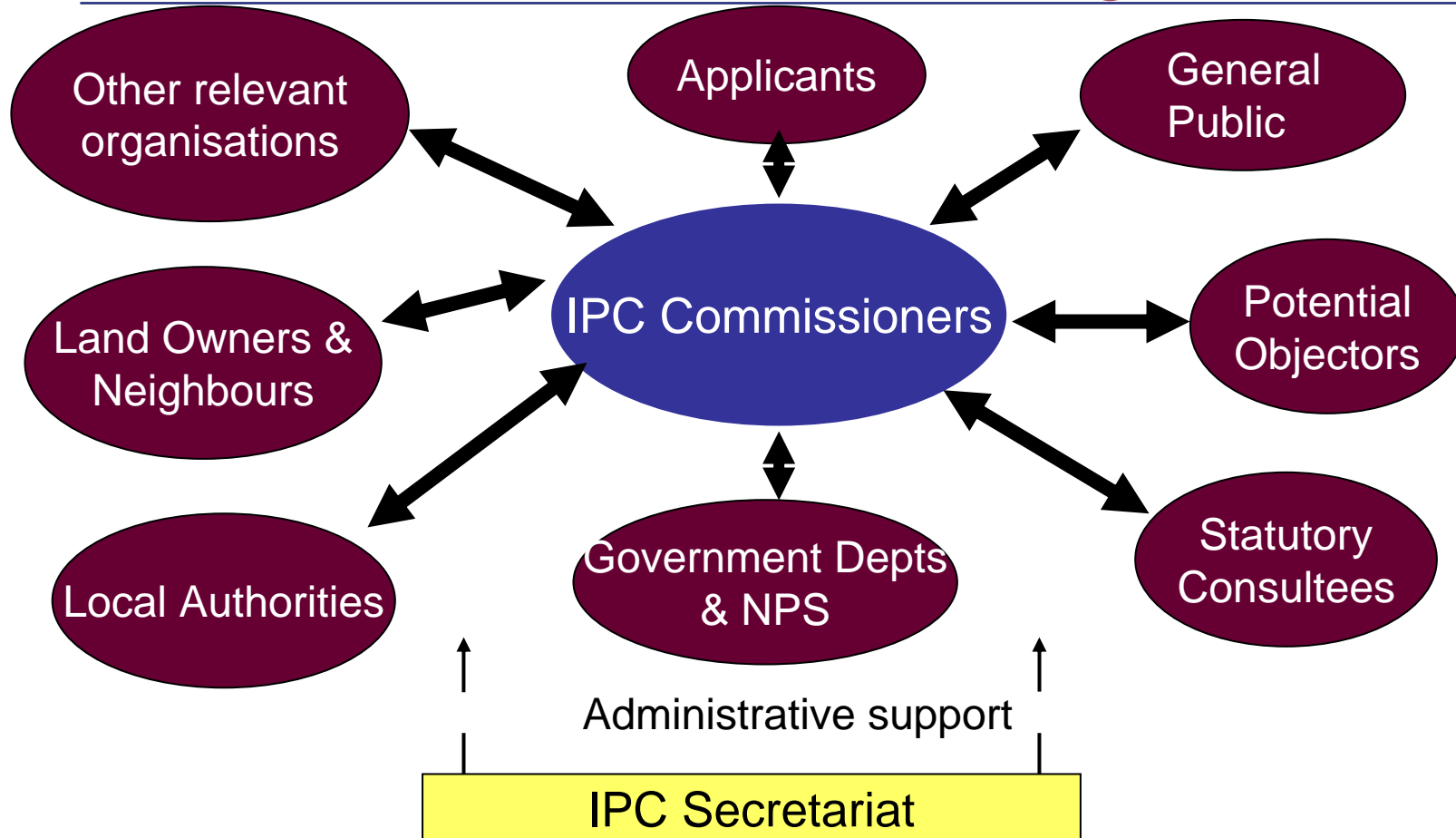
- IPC criteria for acceptance
- Consultation Report
- Local Authority representations on consultation
- Publicity and notification for accepted application

## *Pre-examination*

- IPC move to centre stage
- Initial representations
- Initial assessment and preliminary meeting

# Post-application: effective gathering of evidence and decision making

---



# The process stage (3)

---

## *Examination*

- Written representations
- Hearings
- Local impact report

## *Making the Decision*

- Issuing of decision notice

## *After the Decision*

- Legal challenges
- Correcting errors
- Approval of details
- Enforcement
- Changes to and revocation of an Order



# Statutory Consultees

---

Statutory consultees play an important role in the process.

The Planning Act 2008, and associated regulations, specify the statutory consultees:

- Local authorities
- Parish Councils
- Public bodies



# Role of statutory consultees and stakeholders

---

- Pre application engagement
- Consultees also have a role in relation to EIA scoping
- Essential that Consultees begin to consider and prepare their input before the application is submitted
- Draft Development Consent Order to include agreed requirements
- Timely input from consultees to the examination
- Some consultees have a key role in liaison on permitting

# Key Statutory Deadlines for Consultees

---

- Scoping Opinion Consultation (28 days)
- Pre application consultation (min 28 days)
- Submission of relevant representation following application acceptance (min 28 days)
- Submission of detailed written representations at examination stage (min 21 days)

# Experience so far

---

- IPC outreach
- Advice Giving
- Encourage engagement
- Scoping opinions
- Stakeholder liaison
- Agree key contacts



# Contact us

---

Infrastructure Planning Commission (IPC)

Temple Quay House

Temple Quay

Bristol

BS1 6PN

0303 444 5000

[ipcenquiries@infrastructure.gsi.gov.uk](mailto:ipcenquiries@infrastructure.gsi.gov.uk)

[www.independent.gov.uk/infrastructure](http://www.independent.gov.uk/infrastructure)