



Rookery South ERF CLP Meeting

20th March 2017

Rookery South- Environmental Permit

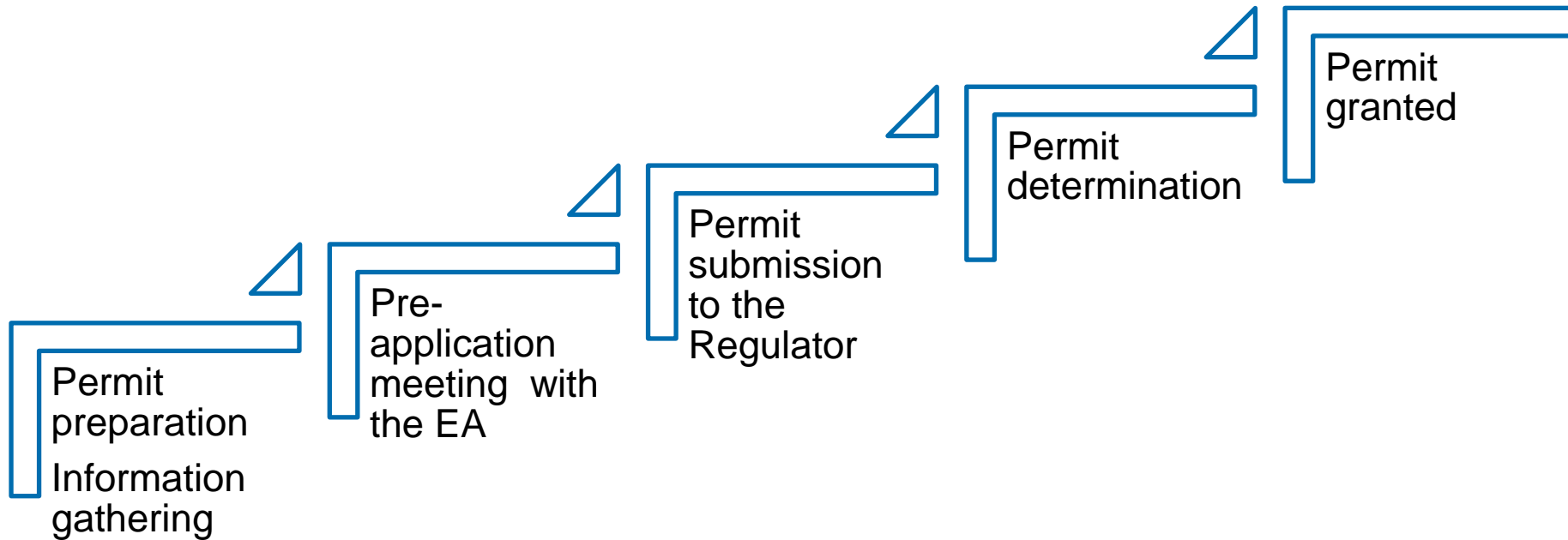
What is an environmental permit?

- The environmental permitting regime regulations require operators to obtain permits for some facilities which handle waste.
- The environmental permit is the legal document granted to the operator by the Regulator in order to operate the facility.

Environmental Permit- Regulatory context

- The Regulations controlling the environmental permitting system are the Environmental Permitting (England and Wales) Regulations 2016.
- They apply in relation to
 - (a) England
 - (b) Wales.
- The regulations implement the requirements of 15 Directives including the Waste Framework Directive and the Industrial Emissions Directive.
- In England for the Rookery South ERF plant, the Environment Agency is the regulator.

Environmental Permit- Process of application



Determination of an ERF permit

Duly made

The application should contain the information required to make a determination

Consultation

Ad in the local newspaper of the application and public consultation
Online public consultation

Technical determination

Detailed examination by expert departments inside the Regulator
Further questions from the Regulator

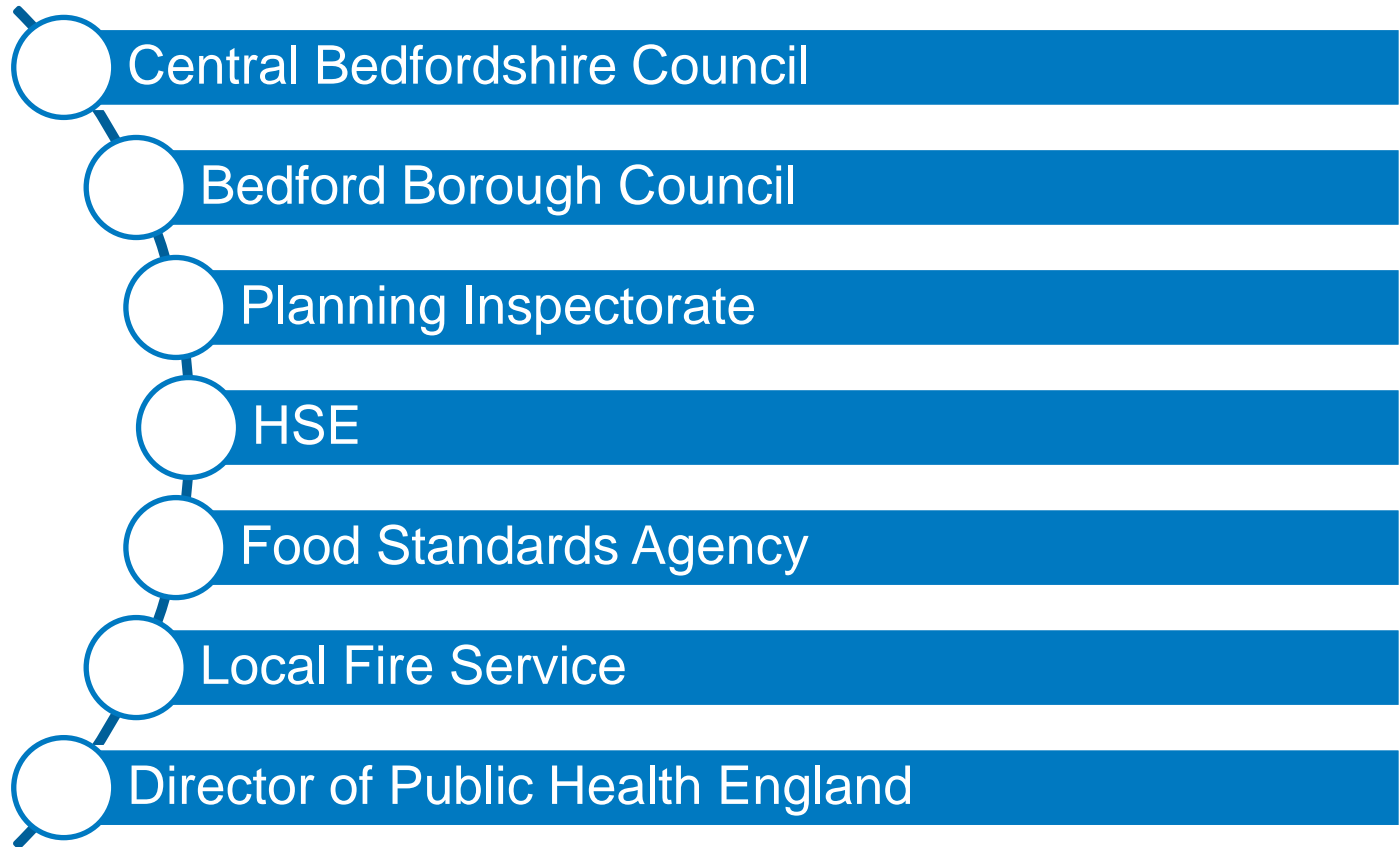
Second consultation

EA will again publish the decision document and draft permit online to consult

Permit granted

Document is determined and provided to the operator

Environmental Permit- Permit application statutory consultees



Environmental Permitting- Application details I

The environmental permit application must contain the following information as required in the Regulations:

- Correct application forms
- Correct fee
- Non technical summary
- Details of the environmental management system
- Details of the operator
- Technical detailed description of the plant including inputs, process, outputs
- Water use
- Emissions
- Emissions monitoring

Environmental Permitting- Application details II

The environmental permit application must contain also the following information as required in the Regulations:

- Description of technology selection and all controls to avoid or reduce any impacts
- Energy efficiency
- Waste recovery and disposal details
- Air quality assessment
- Human health risk assessment
- Best available technique assessment
- Noise assessment
- Environmental risk assessment
- CHP assessment
- Fire Prevention Plan
- Closure

Environmental Permitting- Final permit

What does the permit look like?

The Permit is a legal document which contains the following sections:

1. General management
2. Operations
3. Emissions and monitoring
4. Information
5. Schedules

Inside each of the sections, the permit contains conditions to control all operations on site.

Environmental Permitting- Compliance

